

Magnetic Encoders

- 雙向霍爾作用譯碼器
Two Channel Hall Effect Encoder
- 單向霍爾作用譯碼器
One Channel Hall Effect Encoder

★ 使用相對溼度: 20%~85%RH ★ 使用溫度範圍: -10°C~+60°C
Operating relative humidity Operating temperature range

外形尺寸 APPEARANCE SIZE

* ULI061 AWG26
ULI007 AWG24

suggested connectors
AMP 175788
Molex 51065
JST PH

JST PHR-6 P=2.0-6P
JST ZHR-6 P=1.5-6P
JST ZH

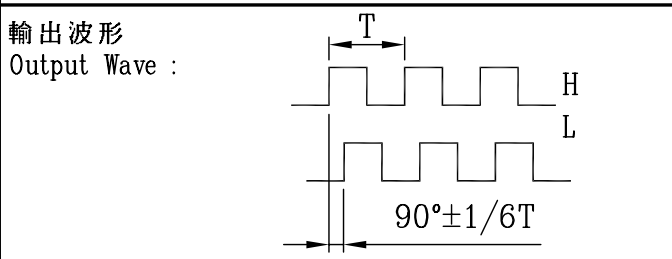
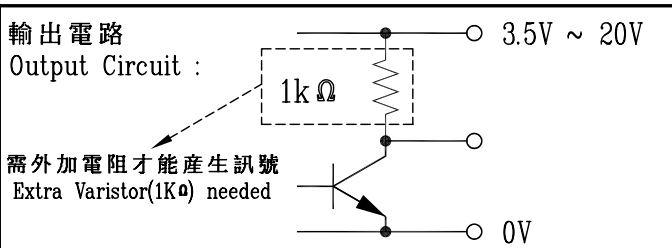
★ WITHOUT CAP

Motor øA	CAP L	COUNTS POLES OF PER TURN(PPR)	
		current	limit.
* ø12	★ 6.5	2, 6 (1, 3)	6 (3)
* ø15.4	★ 6.5	2, 6 (1, 3)	6 (3)
ø20.3	★ 8.5	2, 6 (1, 3)	6 (3)
ø27.9	12.6	2, 6, 14, 26 (1, 3, 7, 13)	26 (13)
ø32	14.3	14, 26 (7, 13)	26 (13)
ø36	13.5	14, 26 (7, 13)	26 (13)
ø42.5	15.5	2, 10, 38 (1, 5, 19)	38 (19)
ø52	18.0	2, 10, 38 (1, 5, 19)	38 (19)
ø54		(1, 5, 19)	

電氣特性

ELECTRICAL CHARACTERISTICS

規格特性 CHARACTERISTICS	代號 SYMBOL	測試條件 TEST CONDITIONS	極小 MIN.	基準 REF.	最大 MAX.	單位 UNITS
輸入電壓 Supply Voltage	Vcc	---	3.5	-	20	V
輸出飽和電壓 Output Saturation Voltage	Vce(sat)	Vcc=14V ; Ic=20mA	-	300	700	mV
輸出漏電流 Output Leakage Current	Icex	Vce=14V ; Vcc=14V	-	< 0.1	10	µV
輸入電流 Supply Current	Ice	Vcc=20V Output open	-	5	10	mA
輸出上升時間 Output Rise Time	tr	Vcc=14V ; RL=820Ω ; CL=20pF	-	0.3	1.5	µS
輸出下降時間 Output Fall Time	tf	Vcc=14V ; RL=820Ω ; CL=20pF	-	0.3	1.5	µS



- Two Channel Encoder
Connections :
1. Black : -MOTOR
 2. Red : +MOTOR
 3. Brown : HALL SENSOR Vcc
 4. Green : HALL SENSOR GND
 5. Blue : HALL SENSOR A Vout
 6. Purple : HALL SENSOR B Vout

- One Channel Encoder
Connections :
1. Black : -MOTOR
 2. Red : +MOTOR
 3. Brown : HALL SENSOR Vcc
 4. Green : HALL SENSOR GND
 5. Blue : HALL SENSOR A Vout
 6. Purple : EMPTY